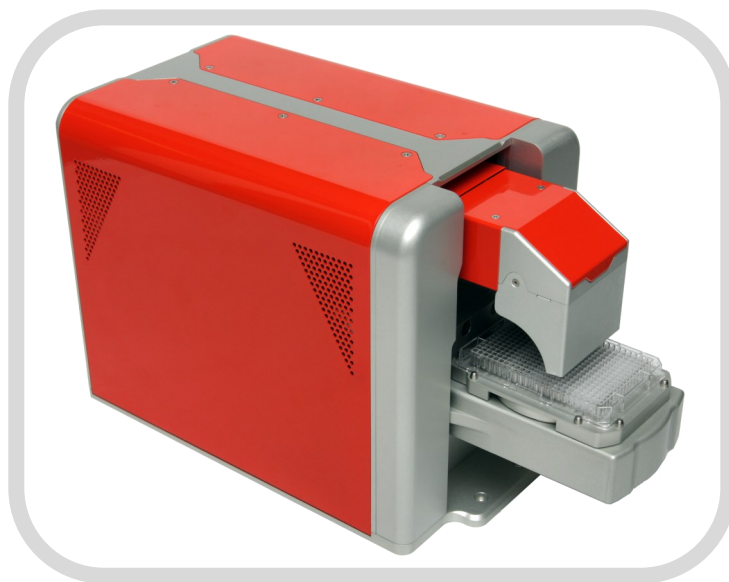


BeeSure™ LEVEL SENSING SYSTEM

- *Validate sample transfer operations*
- *Peace of mind, quality control*
- *Small footprint, self-contained*
- *Simple operation and reporting*
- *Fast, user-friendly*
- *Non-contact sensing*
- *Liquids, powders, solid*



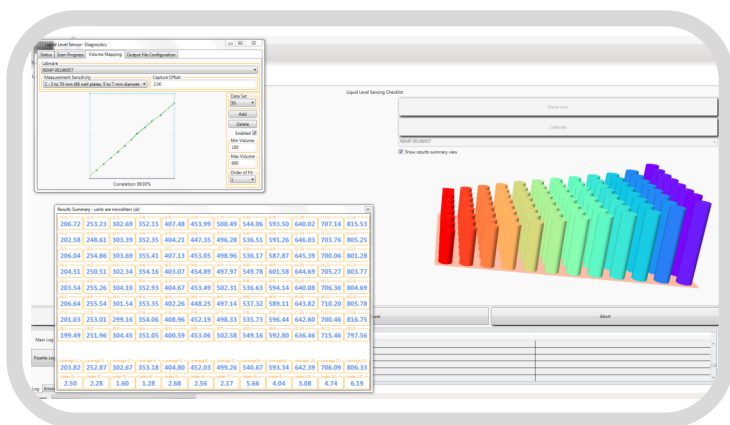
BeeSure™ 96/384 Level Sensing System

The BeeSure Level Sensing System provides peace of mind that your sample handling automation delivers what you require it to do. This quality control tool measures the change in level within a sample vessel (microplate well, micro-tube, vial, reagent container, test tube) on the addition or subtraction of substance within the sample vessel. The substance can be either liquid or solid.

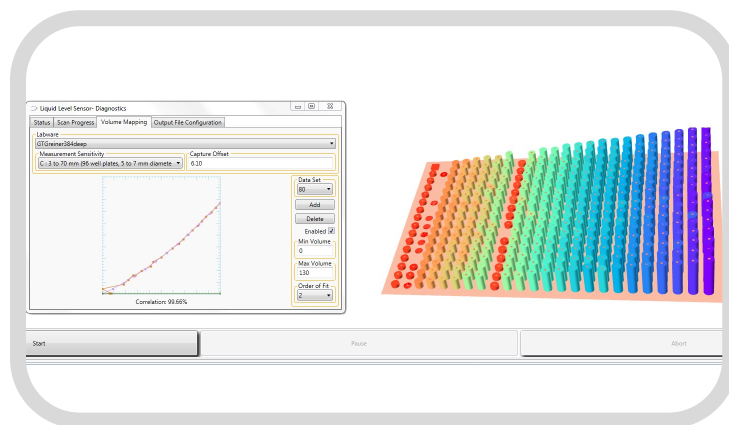
Using a unique sensing technology, BeeSure adds to life science lab automation the same function that vision QC systems provide for large scale industrial manufacturing processes. Proactively detect a faulty dispensing system or blocked tip during pipetting operations. Verify that all the wells in a microplate are as they should be, both before

and after the pipetting tasks in your workflow. Ensure that you have enough substance in a reagent supply vial or reservoir to complete a run with your automation system. Continuously monitor your processes to validate and document their execution before wasting high value samples and reagents because you were unaware of a system failure.

BeeSure is easy and intuitive to use, only requiring one standard electrical output and a very small space on your automation platform, sample deck or lab bench. Place multiple BeeSure units at different nodes in your work flow to increase throughput and efficiency.



REMP 2 mL 96 tube rack



Greiner 384 deep well microplate

Key Features and Benefits

- 96-well plates (std. or deep) and tube racks in 30 seconds. 384-well plates in 2 minutes at standard precision (± 0.1 mm)
- Topographic map for any surface within an ANSI/SBS footprint. Detect de-lidding errors, on or off or other depth anomalies, missing vials, reagent bottles
- Easy integration and data output to LIMS
- 3D bar graph for easy visualization of substance volume for known vessel. Estimated volume charted from standard curve
- No consumables for operation

General Specifications

	BeeSure 96	BeeSure 96/384
Height (inches)	9.7	10.9
Width (inches)	8.9	8.9
Depth (inches)	19.1	19.5
Weight (pounds)	35.3	36.9
Plate indexing	No	Yes
Loading	Drop in, portrait only	Portrait and landscape
96-well formats	Most	Most
384-well formats	Limited	Most
Maximum vessel height (mm)	51	51
Communications	USB 2.0	USB 2.0
Electrical	100–240 VAC, 50/60 Hz, 2 A	100–240 VAC, 50/60 Hz, 2 A

For Research Use Only. Not for use in diagnostic or therapeutic procedures.

LIT-50001 Rev A Effective 2015-02



BioNex Solutions, Inc.
 2340 Bering Drive
 San Jose, CA 95131
 (408) 855-8863
 info@bionexsolutions.com

www.bionexsolutions.com

©2015 BioNex Solutions Inc.